

Within Your Shelter, Loving God 168

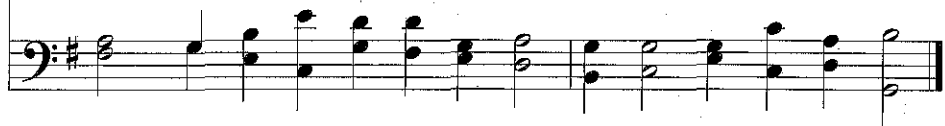
(Psalm 91)



1 With - in your shel - ter, lov - ing God, my ref - uge and my tower,
 2 Be - cause I trust in you a - lone, no e - vil shall come near.
 3 Your ho - ly an - gels bear me up and keep my feet se - cure.
 4 As of - ten as I call to you, you kind - ly hear my prayer.
 5 All those who know your name on earth shall life a - bun - dant know.



I safe - ly walk by day and night be - neath your guid - ing power.
 The strong de - fend - er of my home, with you I have no fear.
 Though fierce and an - gry foes as - sail, in you my way is sure.
 In times of trou - ble and dis - tress I rest in your own care.
 On all a - bid - ing in your love your sav - ing grace be - stow.



The most familiar part of this paraphrase of Psalm 91 may be the third stanza, based on verses Satan quotes when tempting Jesus to throw himself off a pinnacle of the Temple (Matthew 4:5-6/Luke 4:9-11). Citing Scripture outside the context of faith undercuts its true power.